

Must-sees at USFSP

By **Adriana Reeves**
adreeves@usf.edu

The Nest

On the first floor of Osprey Suites, The Nest offers students the perfect location to grab a bite to eat and unwind. The newly opened dining hall offers students various modern food and dining options, and offers dine-in or to-go options.



MOLLY RYAN | THE CROW'S NEST

The SLC serves as a common meeting place for student life at USF St. Petersburg.

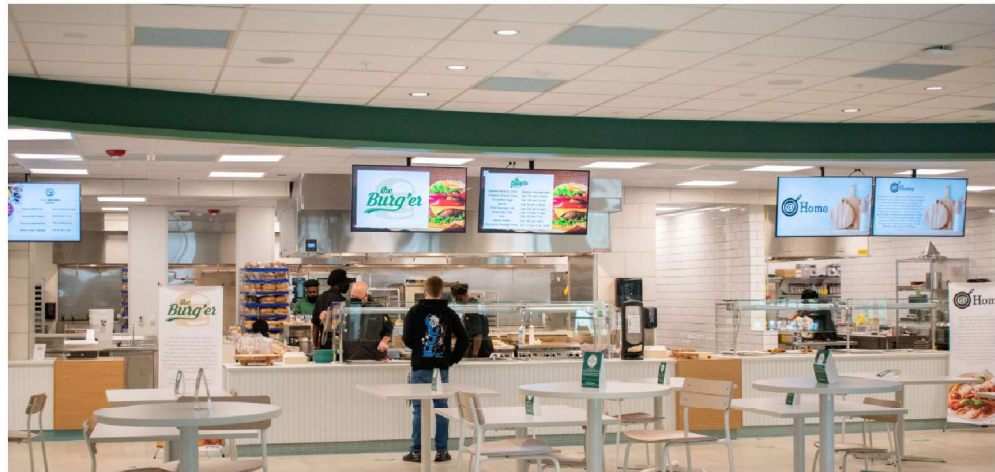
Student Life Center

Stressed and need to pump some iron? The state-of-the-art gym is waiting for you at the Student Life Center. Across from Pelican Apartments, many student organizations also operate out of the building. Students frequently use the SLC to recuperate from their hectic schedules and meet with friends.



MOLLY RYAN | THE CROW'S NEST

The Nelson Poynter Memorial Library offers three floors of study space for students to utilize.



ANNALISE ANDERSON | THE CROW'S NEST

Enjoy the all-you-can-eat buffet at The Nest, which features modern and affordable dining options for all students.

Nelson Poynter Memorial Library

If you need a quiet spot to study, the Nelson Poynter Memorial Library is the perfect place for you. Many students gather in the library for study sessions or a general meeting spot for group projects. The building has three floors of study and a staff that is eager to help you with any questions you have.

USF St. Petersburg Bookstore

At the start of each semester, the USF St. Petersburg Bookstore is a bustling hub for all students. Inside the bookstore, students can grab a revitalizing coffee and catch up on their schoolwork. Tucked away on Third Street, the bookstore is less than a block away from the University Police Department.



MOLLY RYAN | THE CROW'S NEST

The Edge gives students a chance to socialize and soak up the sun with indoor and outdoor spaces.

The Edge
 Whether you want a relaxing day or a spot to study in the sun, The Edge

is the place to be. The Edge offers indoor and outdoor activities that were created for all students to socialize.

Appropriately named for being located on the edge of campus, this location will be one of the first places that most students start their USF St. Petersburg journey since this is a common space for orientation and campus tours.

Harbor

Take in the stunning views that downtown St. Petersburg offers and relax from your busy day of classes at the harbor. USF St. Petersburg offers benches and prime waterfront views. If you are lucky enough, you might even see some marine wildlife.



MOLLY RYAN | THE CROW'S NEST

Unwind and relax from your busy class schedule with the waterfront views at the Harbor.